

PARK SPARKS

April 2024



PARK ELECTRIC
Cooperative Inc.



*In April, we celebrate **Lineworker Appreciation Day** to honor the hard work these dedicated men provide to keep the lights on. Rain or shine, day or night, lineworkers brave challenging conditions to make sure we have electricity when we need it.*

*Our crew: (from left to right) **Gunner Bergsing, Tanner Tawater, Eric Salazar, Dane Bondurant, Josh Wood, Brady Zachmann, Josh Fatouros, Cole Boss, Cole Kimball, Ryan Harms.***

Thank you for all your hard work!

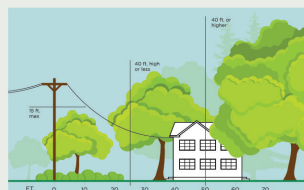
Have you checked out your account access online? Park Electric offers members online account access where you can view your bills, set up automatic payments and manage your mailing address. Just visit www.parkelectric.coop and click on the "View/Pay" bill button at the top of the home screen. You will need your full account number and a correct last four digits of your phone number to get started.

As always, please keep the office updated with any phone number and address changes so we can stay connected.

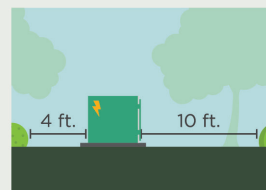
3 Ways to Help Limit Tree Trimming

Did you know electric utilities are required to trim trees and other types of vegetation that grow too close to overhead power lines? We know you love your trees, and we will do everything we can to avoid trimming them. Here's how you can help:

1. Plant trees in the right place. Trees that will be <40 ft. should be planted at least 25 ft. away from power lines (>40ft. should be at least 50 ft. away).



2. Don't block pad-mounted transformers. Plant shrubs at least 10 ft. away from transformer doors and 4 ft. from transformer sides.



3. Report dangerous branches. If you spot a tree or branch that is dangerously close to power lines, please let us know.



Trimming improves safety for all. Let's work together to enjoy the beauty of trees and reliable electricity.

Here are five reasons why we enjoy serving you:

1. We're here because of you. Our purpose at Park Electric Cooperative is to bring value to our member-owners and communities by providing reliable electricity, and superior customer service at fair and reasonable prices. Park Electric was founded to bring power to our local area when for-profit utilities wouldn't step in.

2. Your support enables us to complete our mission. Giving back is a crucial part of what we do. Last year, PEC donated to local schools for books, supported Park High's sports program, contributed to 4-H groups in our service counties, and awarded 15 scholarships at our Annual Meeting through the Luck of the Draw program (funded by unclaimed capital credits).

3. Our members shape our direction. Through our board of directors, who are co-op members, we get guidance on setting priorities and making important decisions. Living in their districts, our board members understand the community's pulse and can identify its needs. The broader membership provides input through voting on director elections and by

communicating community issues to their elected trustees.

4. You help us improve. Park Electric members play a vital role in keeping us informed. While we strive to minimize outages, nature can sometimes intervene. Your prompt reporting of disruptions and patience as our crews work to restore power are invaluable. We know outages are frustrating and your support as we work through disruptions means so much to our employees. Your opinions are critical to our success.

5. Community matters to us. You and other PEC members are the heart of the community we serve. Like you, our employees live and work here, and we're deeply invested in its well-being. That's why we donate to local charities, schools, organizations, and scholarship funds, aiming to enhance the quality of life and ensure its long-term prosperity.

As a cooperative, our mission is to enhance the quality of life in our community and look after its long-term interests. We enjoy serving our members and our local community, and just like you, we want to see it continue to thrive.

ENERGY EFFICIENCY TIP OF THE MONTH

A well-designed landscape can add beauty to your home and reduce home heating and cooling costs. Plant deciduous trees with high, spreading crowns to the south of your home to block sunlight in the summer and reduce the need for air conditioning. Deciduous trees lose their leaves in the winter, allowing sunlight to warm your home.

Plant evergreen trees and shrubs with low crowns to block winter winds. Dense evergreen trees and shrubs planted to the north and northwest are the most common type of windbreak and can help lower energy used for home heating.

Source: energy.gov

Park Electric Board of Trustees

District 1 - Alan Johnstone 406-220-2186
District 2 - Dan Skattum 406-223-0545
District 3 - Craig Yost 406-223-3008
District 4 - Matt Jesson 406-939-2306
District 5 - Bert Otis 406-333-4802
District 6 - William Brownlee 406-932-6210
District 7 - Perry Anderson 406-537-4546
General Manager - Matt Haggerty 406-222-3100

Connect with Park Electric

Billing and general information: 406-222-3100
Outage and project information: 406-222-7778

Online: www.parkedelectric.coop
Email: info@parkelectric.coop

Office hours: 8-5 Monday - Friday

Location: 5706 US Hwy 89 S
Livingston, Montana

