

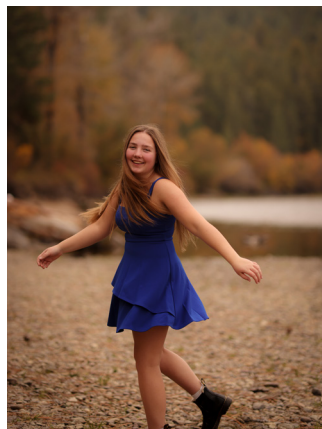
PARK SPARKS

May 2024



Basin Scholarship Winner

Congratulations to the 2024 winner of the Basin Electric Power Cooperative scholarship! This year, Ava Burkes from Shields Valley won the \$1000 scholarship.

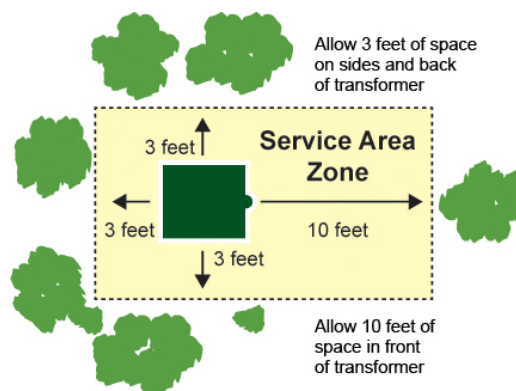


During her years at the Shields Valley schools, she has been a member of the National Honors Society, student council, band, choir, volleyball, and yearbook. Ava is an aspiring marine scientist and after graduation she is planning to attend the University of Maine. She is looking forward to a coastal semester at the Darling Marine Institute.

Best wishes with your future pursuits, Ava!

TRANSFORMER CLEARANCE

When planting or building this spring, please remember to leave our crews room to work around our transformers and meter bases. Plants or construction too close to our equipment may have to be removed.



ENERGY EFFICIENCY TIP OF THE MONTH

Looking for an easy way to manage home energy use? Smart plugs are inexpensive and offer convenient solutions for scheduling and controlling your favorite electronic devices.

With smart plugs, you can easily manage your coffee maker, lighting, home office equipment, video game consoles and more. Smart plugs can help you manage devices through a smart phone app, your home assistant or voice control. By conveniently powering off or scheduling devices, you can save energy (and money!).

Source: energystar.gov

5 WAYS TO SAVE THIS SUMMER

When summer temperatures rise, so do our energy bills. Here are a few ways you can reduce energy use and grow your summer savings.

- 1. Raise your thermostat.**
The smaller the difference between the indoor and outdoor temp, the more you'll save.
- 2. Install window coverings**
like blinds or light-blocking curtains to prevent indoor heat gain during the day.
- 3. Seal leaks with caulk and weatherstripping** around windows and exterior doors. Air leaks force your air conditioner to work harder and run longer than necessary.
- 4. Run ceiling fans** for additional cooling but turn them off when you leave the room.
- 5. Lower your water heater thermostat** to 120 degrees to reduce standby heat loss.



Source: Dept. of Energy

While ensuring the safety of our members and employees is a top priority year-round, during the month of May, electric cooperatives across the state and nation join together to recognize National Electrical Safety Month by promoting awareness of the dangers of electricity and how to be safe when using electrically powered devices.

Many electrical accidents and tragedies involve common items such as power outlets, appliances, power cords, power equipment and extension cords. The good news is that these accidents can be avoided through a few simple precautions.

Here are several tips to keep in mind when using electricity:

- Always read and understand the operator's manual before using an appliance or tool.
- Never use a product with a damaged electrical cord.
- Never use extension cords on a permanent basis.
- Only use extension cords properly rated for the devices you plan to plug into it.
- For the safety of children in your home, install tamper-resistant outlets or protective coverings.
- Don't overload outlets or circuits. Plugging too many items into an outlet or drawing too much power on a circuit can cause overheating, fire, and damage to devices.
- If your outlets are warm to the touch, immediately shut them off at the circuit breaker, and contact a qualified electrician to make repairs.

- Install ground fault circuit interrupter (GFCIs) in areas that may be wet or damp. GFCIs help protect

against electrical shock. Use the test and reset button monthly to ensure they are working properly.

- If an appliance repeatedly blows a fuse, trips a circuit breaker, or has given you an electrical shock, immediately unplug it and have it repaired or replaced.
- Look up for power lines when using long metal tools like ladders, pool skimmers, and pruning poles to stay safe. Keep the tools and yourself at least 10 feet away from electric wires.
- Call 8-1-1 at least three business days before you plan to do any digging.
- Never go near a power line. If you encounter a downed line, leave the area immediately warn others in the area and notify your cooperative or call 911. Never place ladders, poles or other items near power lines, and don't drive over downed lines.



Park Electric Board of Trustees

District 1 - Alan Johnstone 406-220-2186
District 2 - Dan Skattum 406-223-0545
District 3 - Craig Yost 406-223-3008
District 4 - Matt Jesson 406-939-2306
District 5 - Bert Otis 406-333-4802
District 6 - William Brownlee 406-932-6210
District 7 - Perry Anderson 406-537-4546
General Manager - Matt Haggerty 406-222-3100

Connect with Park Electric

Billing and general information: 406-222-3100
Outage and project information: 406-222-7778

Online: www.parkedelectric.coop
Email: info@parkedelectric.coop

Office hours: 8-5 Monday - Friday

Location: 5706 US Hwy 89 S
Livingston, Montana

